



PRECUT

COLLECTION



01

About Us

02

**Vision &
Mission**

03

**Our Core
Values**

04

**Company
Culture**

05

The Team

06

**Business
Units**



TABLE OF

CONTENTS



About Us

THE PRECUT Collection is a diversified business conglomerate, representing excellence across multiple sectors, including real estate, architecture, energy, consulting, agriculture, and FMCG.

Comprising six dynamic business units—Plinths and Pitches, Rumis Altt, Extin Energy, CDIM, Urban Agro, and Toju Care—our group is focused on delivering world-class solutions that enhance lives, optimize businesses, and create lasting value.

With operations spanning Nigeria and beyond, THE PRECUT Collection is positioned at the forefront of innovation, sustainability, and high-quality service delivery.



Mission

To unlock value, drive innovation, and foster sustainable growth through exceptional service delivery and strong partnerships.



Vision

To be a globally recognized diversified group, setting and leading the pace in our field by delivering exceptional value, fostering innovation, and embracing sustainable practices.

Core Value & Company Culture

1. Innovation and Excellence: We strive to be leaders in our respective sectors, delivering innovative and high-quality solutions.

2. Sustainability and Responsibility: We are committed to operating in an environmentally responsible manner and contributing positively to the communities we serve.

3. Collaboration and Teamwork: We foster a culture of collaboration and teamwork, recognizing the value of diverse perspectives and expertise.

4. Integrity and Ethics: We adhere to the highest ethical standards in all our business dealings, building trust and credibility.

5. Customer Focus: We are dedicated to understanding and exceeding our customers' needs, delivering exceptional service and value.



Company Culture



We empower our employees to take ownership of their work and contribute to the company's success.



We encourage a culture of lifelong learning and professional growth.



We promote a healthy work-life balance, recognizing the importance of personal well-being.



We are committed to giving back to the communities in which we operate and making a positive impact on society.



We value diversity and create an inclusive environment where everyone feels respected and valued.

Meet Our Group Head

Ladies and gentlemen, distinguished partners, and valued stakeholders, Today, I stand before you, not just as the CEO of The Precut Collection, but as a firm believer in the limitless potential of Nigeria and the transformative power of innovation on a global scale.

The Precut Collection is more than a business conglomerate; it is a testament to what can be achieved when ambition meets purpose. Across our six dynamic business units—Plinths and Pitches, Rumis Altt, Extin Energy, CDIM, Urban Agro, and Toju Care—we are redefining industries, building communities, and shaping a sustainable future.

At the heart of everything we do is a commitment to excellence, sustainability, and collaboration. These values guide us as we embrace Nigeria, Africa and global unique opportunities, transforming them into global benchmarks for success.

We are living in an era of immense challenges—climate change, economic disruptions, and social inequality. Yet, within these challenges lie opportunities. As Nigerians, and as global citizens, we are compelled to rise to these challenges with resilience, creativity, and courage.

Our vision extends beyond borders. While our roots are deeply Nigerian, our impact is global. We believe in a future where the brilliance of Nigerian ingenuity leads the way in energy, architecture, agriculture, and more, influencing markets and communities across continents.

Together, let us shape a world where innovation drives prosperity, where sustainability secures our tomorrow, and where partnerships create enduring value.

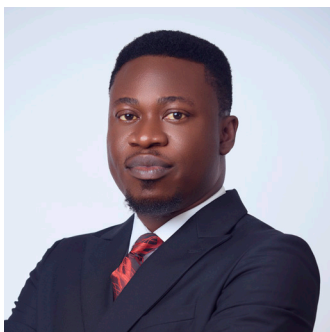
This is our purpose, our mission, and our promise at The Precut Collection. Together, we are not just building businesses; we are building a legacy for generations to come.

Thank you.

Folami Olawale. O
Group Head / CEO



Meet The Team



Eniola Olatunji

General Manager /
SBU Head
Plinths and Pitches



Ruth Aribilola

Chief Operating Officer /
SBU Head Urban Agro



Ruth Ayeni

Head legal /
SBU Head Toju Care



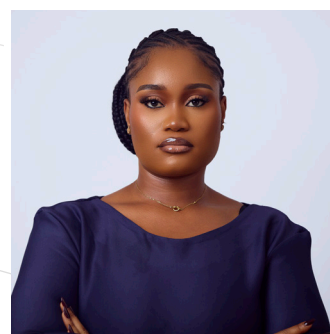
Chibueze Okere

Head Special Project
/ SBU Head
CDIM & Extin Energy



Ibitoye Adeniyi

Head Architect /
SBU Head Rumis Alt



Rita Nwankwo

Head Corporate Comms



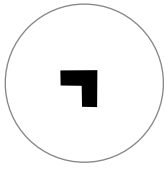
Adaobi Nwokeji

Company's
secretary



Ayomide Olotu

Executive Assistant.



Our Business Units





Plinths And Pitches Partners Limited

Plinths and Pitches is a full-service real estate development firm committed to delivering exceptional projects that redefine the landscape.

We specialize in creating high-end residential properties, from luxurious villas to contemporary apartments. By providing a comprehensive range of services, we empower our clients to achieve their real estate goals. We are dedicated to building strong relationships with our clients, based on trust, transparency, and a shared commitment to excellence.

Services

Land
Acquisition

project
feasibility
studies

real estate
property
development,

Sales and
Marketing

project
financing



- **Market Trends**

The real estate market is undergoing significant transformation due to urbanization, sustainability, and technological advancements. Rapid urbanization is driving demand for properties in areas with strong infrastructure, while the shift toward remote work has increased interest in flexible co-living and co-working spaces. Sustainability is also a priority, with rising environmental awareness fueling demand for eco-friendly, energy-efficient buildings. At the same time, technology is revolutionizing the industry, with virtual property tours and smart home automation enhancing customer experiences. Together, these trends are reshaping the real estate landscape, pushing developers toward more adaptable and sustainable solutions.



- **Opportunities**

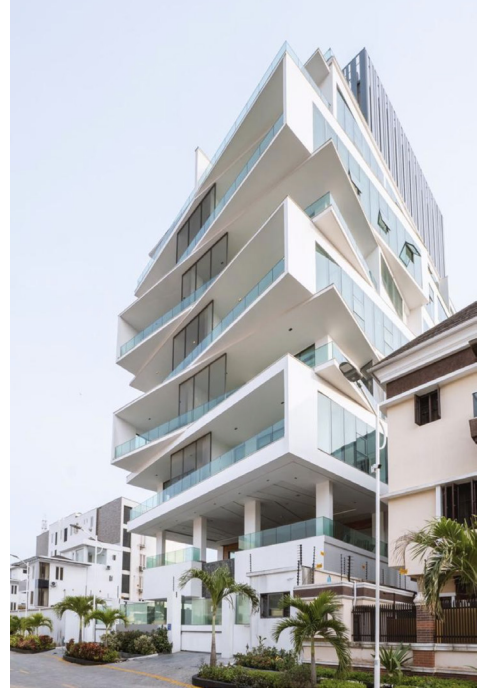
Plinths and Pitches is leveraging emerging market trends to deliver cutting-edge, sustainable real estate solutions. The company is committed to eco-friendly development by incorporating energy-efficient designs, green technologies, and sustainable materials into its projects. It is also embracing technology, such as virtual property tours and smart home automation, to enhance customer experience and modernize living spaces. Recognizing changing consumer preferences, Plinths and Pitches is developing flexible and adaptable spaces like co-living and co-working facilities to cater to diverse lifestyles. By focusing on these areas, the company is poised to meet evolving client needs while contributing to a more sustainable and innovative future.



Ara



Exclusivity.



F212
Inspiration





Rumis Altt

Rumis Altt is a premier architectural design firm recognized for delivering innovative and sustainable design solutions. The company specializes in creating bespoke designs that seamlessly blend form and function, tailored to the unique needs of each client. With extensive international experience spanning diverse cultures and climates, Rumis Altt has successfully completed design projects in countries such as India, Rwanda, the UK, Cameroon, and Gambia. The firm prioritizes sustainable practices, utilizing environmentally conscious methods to minimize impact while crafting inspiring and unique spaces. By working closely with clients to understand their vision, Rumis Altt consistently delivers design projects to the highest global standards.

Services

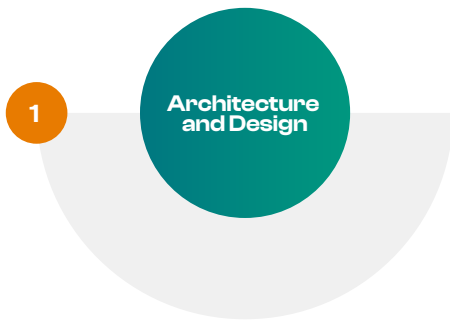


Architectural
design
consultancy

Urban planning
and design

Project
Managemen

Interior
Architecture
design



- Market Trends

Demand is rising in Nigeria for modern, attractive, and functional buildings, with a growing preference for sustainable, energy-efficient designs. Government infrastructure and urban renewal initiatives offer architects and designers opportunities to reshape cities.



- Opportunities

Rumis Altt's focus on luxury home construction and innovative design positions it to capture a significant share of the high-end market. The company can leverage its expertise to create unique architectural solutions for discerning clients and explore opportunities in commercial architecture, hospitality design, and urban planning to diversify revenue streams.



Aso Rock
Villa



Piece
of Art

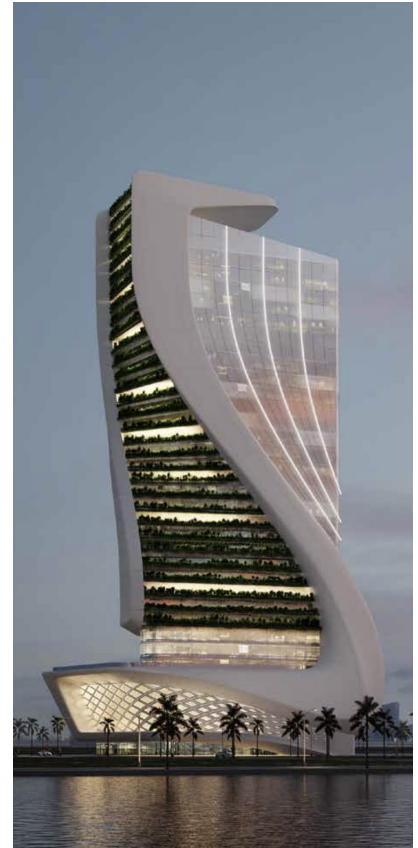


Maison Luxe

*Every
Moment*



Maison La tour





Extin Energy

Extin Energy is a leading player in Nigeria's energy sector, driving progress across upstream and downstream operations with a focus on sustainable and innovative solutions. We align our initiatives with SDG 7 (Affordable and Clean Energy), SDG 8 (Decent Work and Economic Growth), and SDG 13 (Climate Action). As a shareholder in the Ekpe Flare Site within OML70, we demonstrate expertise in reducing environmental impact while maximizing energy production. In downstream operations, we maintain strong partnerships as off-takers of finished petroleum products from modular refineries and Depots.

Extin Energy is also diversifying into renewable energy, including solar projects and electric vehicle (EV) mobility, developing a robust ecosystem for EV adoption. Additionally, we offer consultancy services in project development, feasibility studies, and energy efficiency solutions. Through sustainable practices and strategic partnerships, we are committed to building a diversified and resilient energy portfolio for Nigeria and beyond.

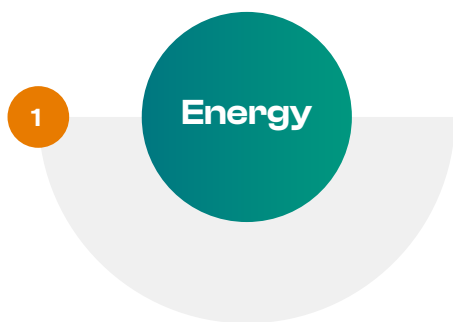
Services

Upstream
Energy
Operations

Downstream
Energy
Solutions

Renewable
Energy
Development

renewable
energy
consultancy.



- Market Trends

The energy market is evolving rapidly, with Nigeria focusing on diversifying its energy mix through renewable energy projects like solar systems and EV mobility, supported by government policies aimed at reducing environmental impact and increasing energy access. Across Africa, the drive for sustainable energy solutions is intensifying, with investments in green technologies addressing energy deficits and supporting urbanization while fostering economic growth. Globally, the transition to clean energy is accelerating, driven by decarbonization goals and advancements in renewable technologies, aligning with frameworks such as the Paris Agreement.



- Opportunities

Extin Energy is strategically positioned to seize these opportunities in Nigeria by scaling its ocean wave, solar and EV projects while leveraging partnerships with refineries to enhance energy production and sustainability. Beyond Nigeria, the company is expanding its renewable energy and consultancy services across Africa and internationally, contributing to global energy transition goals and reinforcing its market leadership.





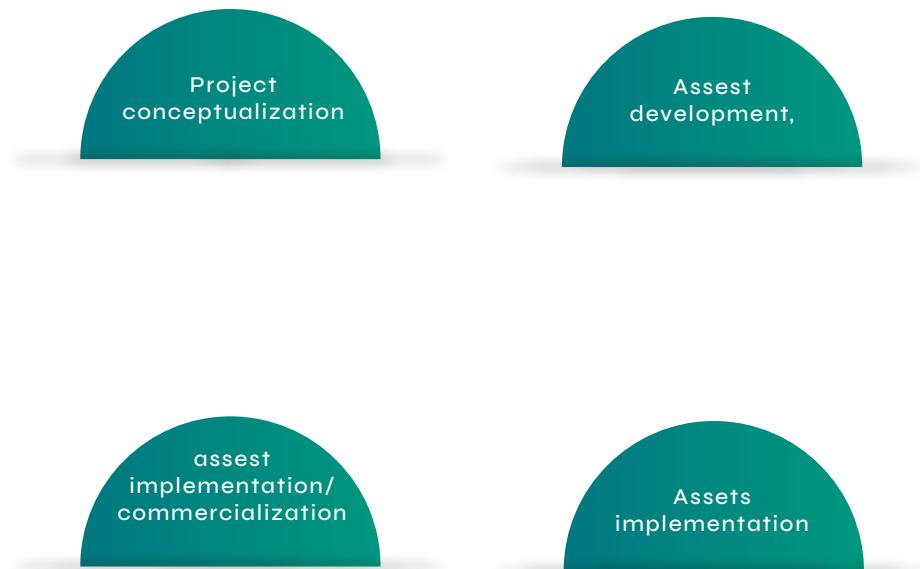
CDIM

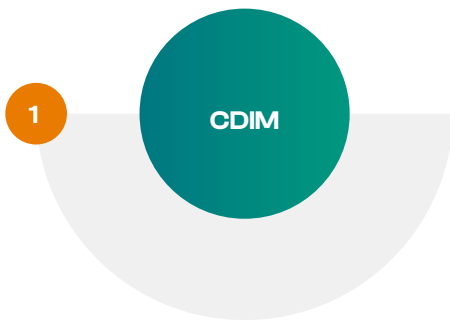
(COMMERCIALIZATION, DEVELOPMENT, IMPLEMENTATION, MONETIZATION)

CDIM is a value creation consultancy that transforms underutilized assets and nascent ideas into profitable ventures. Our team offers strategic guidance across a variety of sectors, such as real estate, tourism, commercial ventures, agriculture, and technology.

We take a holistic approach to project development, from conceptualization to execution and Management.

Services





- Market Trends

The Nigerian consulting industry is growing steadily due to rising demand for specialized expertise across sectors. Companies seek strategic guidance to tackle complex challenges, improve operations, and boost competitiveness. Additionally, the government's emphasis on economic development and diversification is creating more opportunities for consulting firms.



- Opportunities

CDIM's focus on value creation and asset transformation sets it apart from traditional consulting firms. Its ability to identify and develop profitable ventures can attract clients seeking innovative solutions.

Additionally, the company can diversify its revenue streams by exploring sustainability consulting, digital transformation, and public-private partnerships.



Strategy
Decisions.

Urban Agro is revolutionizing Nigeria's agricultural sector by focusing on the development and supply of innovative agro-products, mechanized farming systems, and advanced crop cultivation techniques. Through the integration of cutting-edge technology and modernized practices, we are enhancing farming efficiency and productivity across the country. Our approach supports the cultivation of high-yield crops while aligning with sustainable practices that attract foreign investment and contribute significantly to Nigeria's GDP. By driving agricultural modernization, we position Nigeria as a competitive player in the global agricultural market, exporting premium products and fostering economic growth. Urban Agro's efforts are reshaping local agriculture while addressing global challenges of food security and sustainability, cementing our role as a key contributor to the international agricultural value chain.

Services

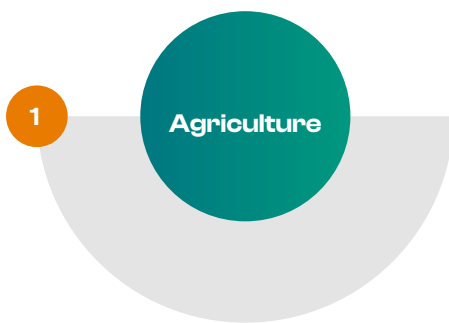
Agro-Paroduct
Supply

Mechanized
Farming Solution

High Value Crop
Cultivation
Support

agricultural
Modernization
Initiatives

Export Facilitation
and Market Access



- Market Trends

The Nigerian agriculture sector is experiencing a resurgence, driven by the government's focus on food security and self-sufficiency. There is a growing demand for modern agricultural technologies, sustainable farming practices, and value-added agricultural products. The government's initiatives to promote agricultural development and improve infrastructure are also creating opportunities for companies in the agriculture sector.



- Opportunities

Urban Agro's focus on innovative agribusiness models and value-added agricultural products positions it to modernize the sector. The company can leverage its expertise to create sustainable, profitable ventures that tackle challenges faced by farmers and consumers. Additionally, it can explore opportunities in agricultural technology, food processing, and export markets to diversify revenue streams.



Cultivate
farming
harvest.

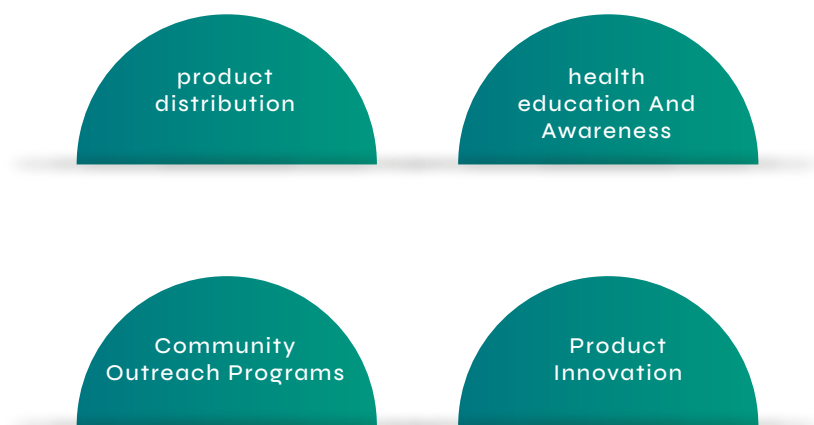


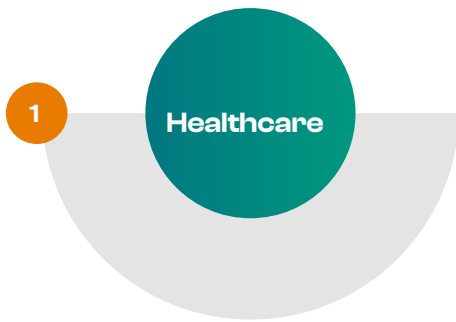
Toju Care

Toju Care is a leading FMCG company dedicated to improving women's health and well-being in Nigeria and across Africa. Our core product, a range of eco-friendly and healthy female sanitary wear, is designed to provide comfort, protection, and peace of mind. By prioritizing quality, affordability, and sustainability, Toju Care is redefining menstrual health and empowering women to live life to the fullest.

Beyond our core product, Toju Care offers a comprehensive suite of services, including, ensuring our products are accessible to women across the country through a robust distribution network. Empowering women with knowledge about menstrual health and hygiene. Collaborating with NGOs and community organizations to promote menstrual health and hygiene in underserved communities. Continuously developing innovative and sustainable sanitary products to meet the evolving needs of our customers.

Services





- Market Trends

The Nigerian healthcare sector is rapidly growing due to urbanization, rising incomes, and better access to services. Demand for quality healthcare products and services is increasing, especially in rural areas.

Government efforts to improve healthcare infrastructure are creating new opportunities for companies in the sector.



- Opportunities

Toju Care's emphasis on female healthcare and eco-friendly sanitary products addresses a specific market need. The company can expand its offerings and enhance access to quality healthcare for women while exploring telemedicine, health insurance, and medical tourism to diversify revenue streams.



Health
Care

Our Commitment, Our Legacy

This team represents the unwavering dedication and collaborative spirit that drive our success. Together, we are building a legacy of innovation, excellence, and impact—creating solutions that stand the test of time.



Some of Our Clients



Partners





Company address:

No 2 Bosun Adekoya Oniru Victoria Island Lagos Nigeria.

Phone number : +234 907 996 4444/ +234 818 887 7723

Email : theprecutcollection@gmail.com

Website: www.theprecutcollection.com